

# 1995 Beechcraft 1900D

*Aircraft Specifications – Serial #: UE-169, Registration: N169GL*



## AIRCRAFT

Year : 1995  
 Make : Beechcraft  
 Model : 1900D  
 Serial Number : UE-169  
 Registration : N169GL  
 Location : Cheyenne, WY (USA)  
 Status : Parked & Serviceable.  
 Specification Date : 7/31/2018

## AIRFRAME

Total Time Since New : 37,928.0 Hrs.  
 Total Cycles Since New : 46,800 Cycles

## CONFIGURATION

Seating Capacity : 19 Seat Economy Class  
 Galleys : None  
 Lavatories : None  
 Flight Deck : 2 Crew

## FEATURES

- First-Run Engines
- Anti-Skid Brakes
- Auto Pilot
- TCAS I & EFIS

**THIS AIRCRAFT IS OFFERED IN "AS IS/WHERE IS" CONDITION WITHOUT ANY REPRESENTATION OR WARRANTY.**

## ENGINES

Make : **Pratt & Whitney**  
 Model/Part Number : **PT6A-67D**  
 Operator TBO : On Condition

	Engine #1	Engine #2
Gas Generator SN#:	<b>PCE-PS0617</b>	<b>PCE-PS0618</b>
Gas Generator TSN :	1,210 Hrs.	1,209.7 Hrs.
Gas Generator CSN :	1,258 Cycles	1,258 Cycles
Gas Generator TSO :	1,209.7 Hrs.	1,209.7 Hrs.
Gas Generator CSO :	1,258 Cycles	1,258 Cycles
Power Section SN#:	<b>PS-PS0617</b>	<b>PS-PS0618</b>
Power Section TSN :	1,209.7 Hrs.	1,209.7 Hrs.
Power Section CSN :	1,258 Cycles	1,258 Cycles
Power Section TSO :	1,209.7 Hrs.	1,209.7 Hrs.
Power Section CSO :	1,258 Cycles	1,258 Cycles

Remaining Cycles	Engine #1	Engine #2
Rotor 1st :	22,742	22,742
Rotor 2nd :	22,742	22,742
Rotor 3rd :	22,742	22,742
Rotor 4th :	22,742	22,742
Stub shaft :	22,742	22,742
Impeller :	22,742	22,742
CT Disk :	6,742	6,742
PT Disk 1st :	13,742	13,742
PT Disk 2nd :	13,742	13,742

## PROPELLERS

Make : Hartzell  
Model/Part Number : HC-E4A-3J  
Operator TBO : On Condition  

	Prop #1	Prop #2
Serial Number :	HJ2050	HJ2137

  
Remaining Hour Life : 3,040.3 Hrs. 3,040.3 Hrs.

## LANDING GEAR REMAINING CYCLES

Nose Shock Strut : 9,516 Cycles  
Left Shock Strut : 6,994 Cycles  
Right Shock Strut : 9,701 Cycles  
Nose Drag Brace : 8,826 Cycles  
Left Drag Brace : 6,994 Cycles  
Right Drag Brace : 9,582 Cycles

## WEIGHTS

Maximum Taxi : 17,230 lbs  
Maximum Takeoff : 17,120 lbs  
Maximum Landing : 16,765 lbs  
Maximum Zero Fuel : 15,700 lbs  
Operator's Empty : 10,719.2 lbs  
Fuel Capacity : 4,458 lbs  
Date Last Weighed : 9/29/2016

## AIRCRAFT VIDEOS

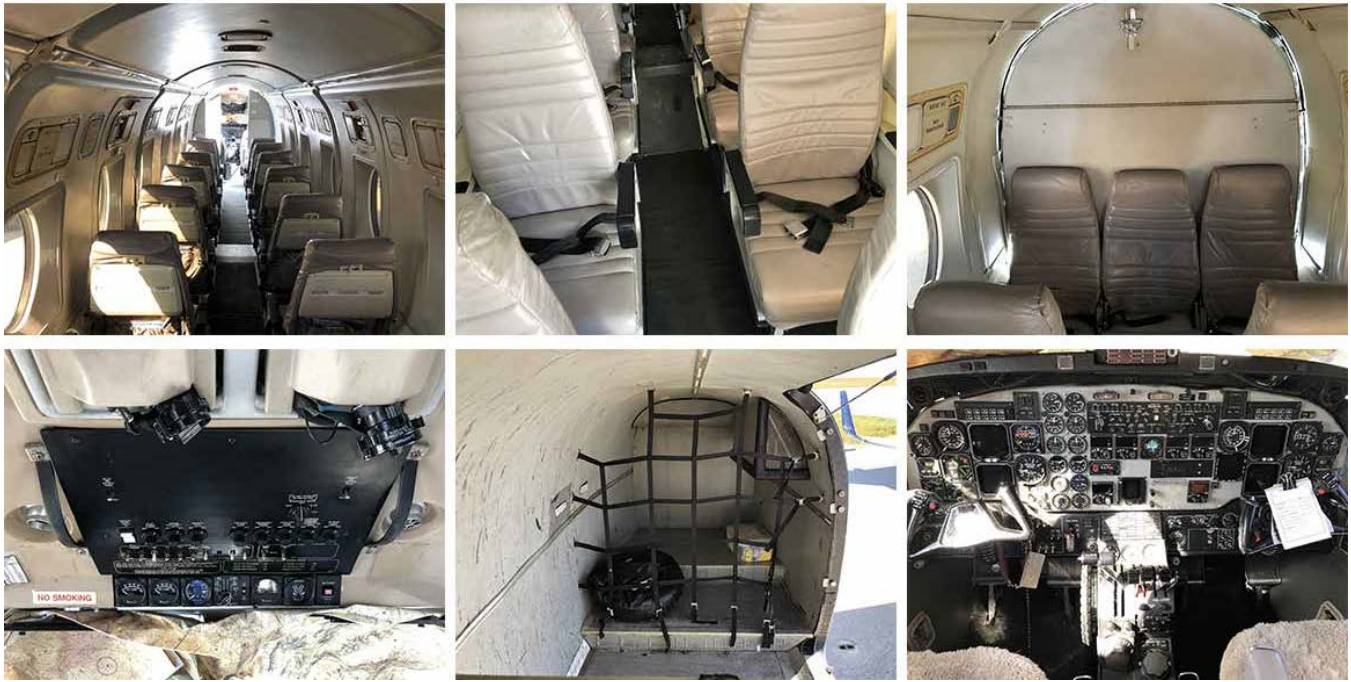
View This Aircraft's Videos @ [https://www.youtube.com/playlist?list=PLaYtRt\\_IQPNBV8hD0FoKQ4WokSgfZNNn4](https://www.youtube.com/playlist?list=PLaYtRt_IQPNBV8hD0FoKQ4WokSgfZNNn4)

## ADDITIONAL PHOTOS



## AVIONICS

ADF : Collins ADF-462  
Altimeter, Enc. : Collins ALI 80-A  
Altimeter, Rad. : Collins ALT-55B  
Auto Pilot : Collins APS-65A  
DME (Dual) : Collins DME-42  
EFIS (Dual) : Collins EFD-84  
GPS : Bendix KLN-90B  
ELT : Artex 129-590000-59  
TCAS I : BF Goodrich TCAS 791  
NAV/COM : Collins VIR-21|VHF-22A/B  
RMI (Dual) : Collins RMI-36  
Transponder (Dual) : Collins TDR-94  
Weather Radar : Collins WXT-250B  
EGPWS : ST3400  
CVR : Fairchild A100A  
DFDR : Fairchild S703-100-00



**SPECIFICATIONS ARE SUBJECT TO VERIFICATION UPON INSPECTION. THIS AIRCRAFT IS OFFERED SUBJECT TO PRIOR SALE OR LEASE AND MAY BE WITHDRAWN FROM THE MARKET WITHOUT PRIOR NOTICE.**

*For more information regarding this aircraft please contact:*



**Jeff Melang**  
Executive Vice President

Phone: [+1-336-722-1616](tel:+13367221616) (GMT-5)  
 Mobile: [+1-336-399-2790](tel:+13363992790)  
 Fax: +1-336-722-1655  
 E-mail: [Jeff@SkyQuestInternational.com](mailto:Jeff@SkyQuestInternational.com)  
 Web: [www.SkyQuestInternational.com](http://www.SkyQuestInternational.com)

**SkyQuest**

International, LLC

2715 Reynolda Road  
 Winston-Salem, NC 27106  
 USA



*SkyQuest International is a global aircraft remarketing and acquisition firm. SkyQuest also provides appraisal services for operators, lenders, leasing companies and asset management firms worldwide. SkyQuest International has been a leading remarketer of aircraft since 1999.*